

# SPK ELECTRONICS CO., LTD.

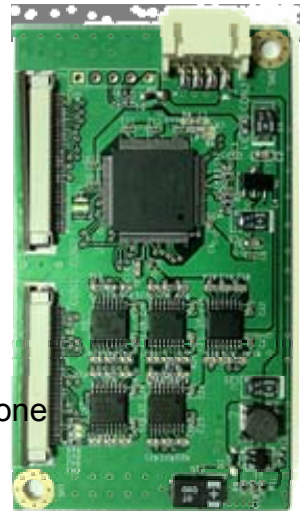
## P-1300 Control Board Data Sheet

Page 1 of 3  
Version 1.02  
Release Date:2011.06.28

### P-1300 USB / I<sup>2</sup>C Interface Control Board

P-1300 control board is one of the cutting-edge innovations from SPK. A collectively integrated feature with USB / I<sup>2</sup>C interface supporting 8" to 10.9" projected capacitive touch screens; complemented by the superbly developed SPK drivers which can be used directly in Windows 7.

P-1300 Control Board uses P2-04 Series controller, which is a capacitive sensing IC designed for AMT Projected Capacitive Input (PCI) touch panel and other projected capacitive touch panel. It is designed for PCI touch screen size up to 10.9". P-1300 Control Board has the programmable filter, gain amplifier; with the functions of single, dual touch; and the gestures of one and two fingers. There are four connectors on this board: two 40 Pins ZIF connectors for PCI touch screen FPC tail, one USB connector for 4-pin USB cable (optional).



#### Specifications

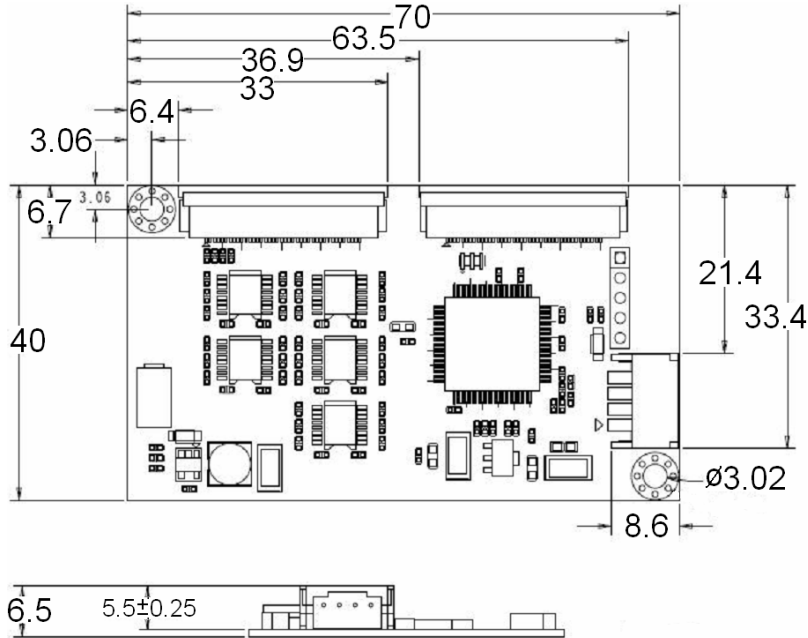
<b>Touch Screen:</b>	Projected capacitive type, size is 8" to 10.9"
<b>Host interface:</b>	USB : Full-speed, 12Mbps I <sup>2</sup> C : Slave , support 400 kHz specifications
<b>Touch Screen Controller:</b>	SPK P2-04 series
<b>Size:</b>	40X70 mm , two 3φscrew holes
<b>ADC resolution:</b>	10 bits
<b>Operating Voltage:</b>	+5V DC for USB & I <sup>2</sup> C
<b>Storage Temperature Range:</b>	-40°C ~ +85°C
<b>Operating Temperature:</b>	-20°C ~ +70°C
<b>Power Consumption:</b>	Typical 25mA
<b>Max. touch line:</b>	23 sensing lines 30 driving lines
<b>Sample rate:</b>	> 100 sps (sample per second)

# SPK ELECTRONICS CO., LTD.

## P-1300 Control Board Data Sheet

Page 2 of 3  
Version 1.02  
Release Date:2011.06.28

### Mechanical size



Unit : mm

### Connector Definition

CON1 40Pin ZIF · PH 0.5mm							
Pin	Description	Pin	Description	Pin	Description	Pin	Description
1	Shield	11	Cap Drive X3	21	Cap Drive X13	31	Cap Drive X23
2	NC	12	Cap Drive X4	22	Cap Drive X14	32	Cap Drive X24
3	NC	13	Cap Drive X5	23	Cap Drive X15	33	Cap Drive X25
4	Ground	14	Cap Drive X6	24	Cap Drive X16	34	Cap Drive X26
5	NC	15	Cap Drive X7	25	Cap Drive X17	35	Cap Drive X27
6	Shield	16	Cap Drive X8	26	Cap Drive X18	36	Cap Drive X28
7	NC	17	Cap Drive X9	27	Cap Drive X19	37	Cap Drive X29
8	Cap Drive X0	18	Cap Drive X10	28	Cap Drive X20	38	NC
9	Cap Drive X1	19	Cap Drive X11	29	Cap Drive X21	39	NC
10	Cap Drive X2	20	Cap Drive X12	30	Cap Drive X22	40	Ground
CON2 40Pin ZIF · PH 0.5mm							
Pin	Description	Pin	Description	Pin	Description	Pin	Description
1	NC	11	NC	21	Cap Sense Y7	31	Cap Sense Y17
2	NC	12	Ground	22	Cap Sense Y8	32	Cap Sense Y18
3	NC	13	NC	23	Cap Sense Y9	33	Cap Sense Y19
4	NC	14	Cap Sense Y0	24	Cap Sense Y10	34	Cap Sense Y20
5	NC	15	Cap Sense Y1	25	Cap Sense Y11	35	Cap Sense Y21
6	NC	16	Cap Sense Y2	26	Cap Sense Y12	36	Cap Sense Y22
7	NC	17	Cap Sense Y3	27	Cap Sense Y13	37	NC
8	NC	18	Cap Sense Y4	28	Cap Sense Y14	38	Ground
9	NC	19	Cap Sense Y5	29	Cap Sense Y15	39	NC
10	NC	20	Cap Sense Y6	30	Cap Sense Y16	40	Ground
CON3							
Pin	Description	Pin	Description	J1			
1	5VIN	1	Ground				
2	D-	2	INT				
3	D+	3	SDA				
4	Ground	4	SCL				
		5	VCC12C				

Add : 10F,NO.510,SEC.5,CHUNG HSIAO E. RD, TAIPEI, TAIWAN

Tel : 02-2346-2323

Fax : 02-2346-3939

E-mail : [spktw@ms34.hinet.net](mailto:spktw@ms34.hinet.net)

WEB:<http://www.spkecl.com>

# SPK ELECTRONICS CO., LTD.

P-1300 Control Board Data Sheet

Page 2 of 3  
Version 1.02  
Release Date:2011.06.28

## **Driver Software:**

### **USB interface :**

Windows XP / Vista / 7 \*

Windows Embedded CE 6.0

Linux (provide the source code for Linux and Android )

\*USB interface support Windows Vista and 7 inbox driver

## **Utility:**

Firmware adjustment utility is ready for user to fine tune the touch panel sensitivity.

Remark: Specification is subject to change without prior notice