

SAW Filter 1842.5 MHz for Mobile Communication

MODEL NO.SPK1842

REV. NO.:2

A. MAXIMUM RATING:

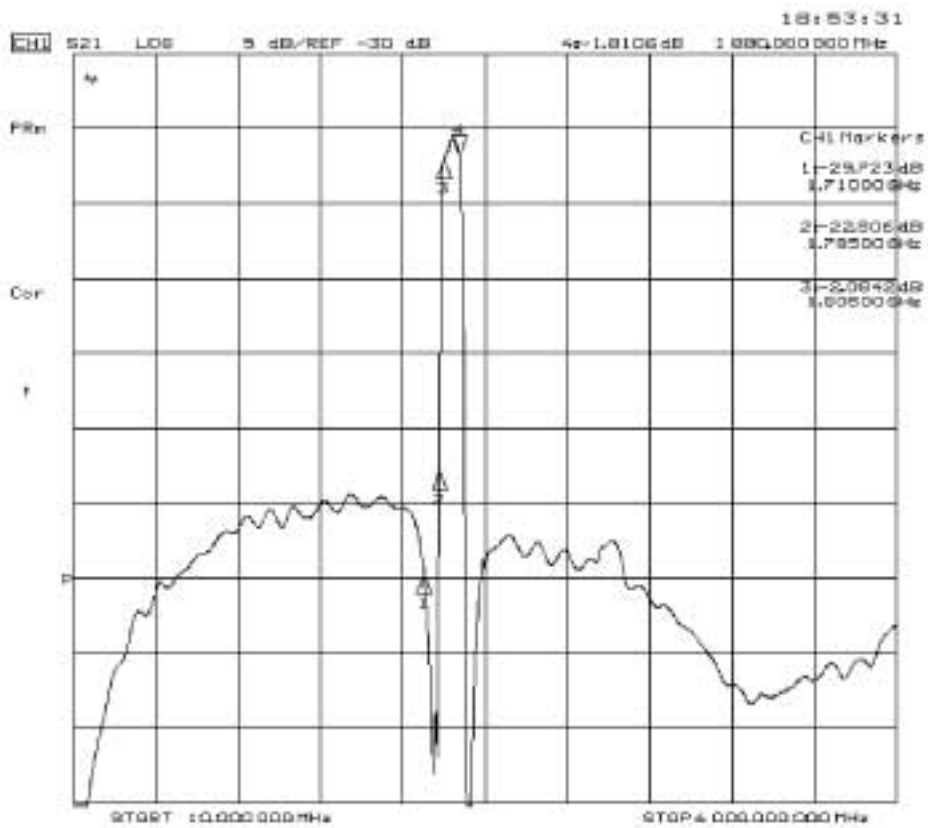
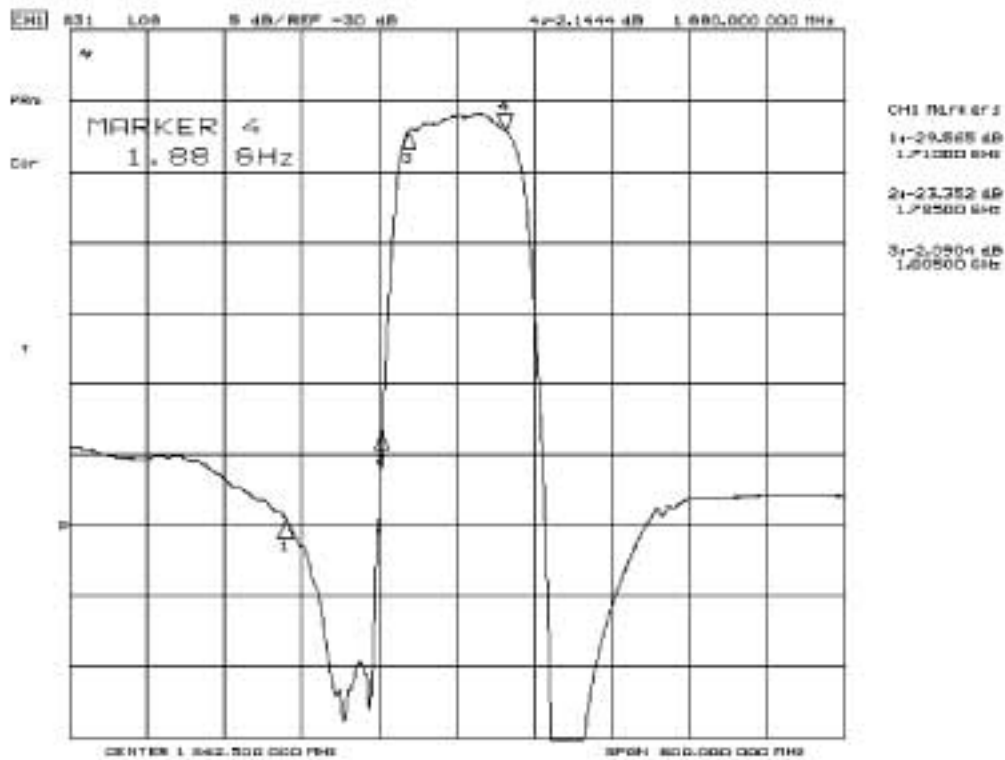
1. Input Power Level: 13 dB_m
2. DC voltage: 0 V
3. Operating Temperature: -30°C to +85°C
4. Storage Temperature: -40°C to +85°C

B. ELECTRICAL CHARACTERISTICS:

Item		Min.	Typ.	Max.
Center frequency	Fc (dB)	-	1842.5	-
Insertion loss within 1805 ~1880 MHz	IL (dB)	-	2.2	3.8
Amplitude ripple (p-p) within 1805 ~ 1880 MHz	(dB)	-	1.3	2.3
Attenuation (Reference level from 0 dB)				
D.C. ~ 1500 MHz	(dB)	20.0	24.5	-
1600 ~ 1710 MHz	(dB)	22.0	25.0	-
1710 ~ 1785 MHz	(dB)	10.0	23.5	-
1920 ~ 3120 MHz	(dB)	25.0	28.0	-
3120 ~ 4000 MHz	(dB)	17.0	30.0	-
VSWR within 1805 ~1880 MHz		-	1.9	2.6
Source impedance	Zs (Ω)	-	50	-
Load impedance	ZL (Ω)	-	50	-

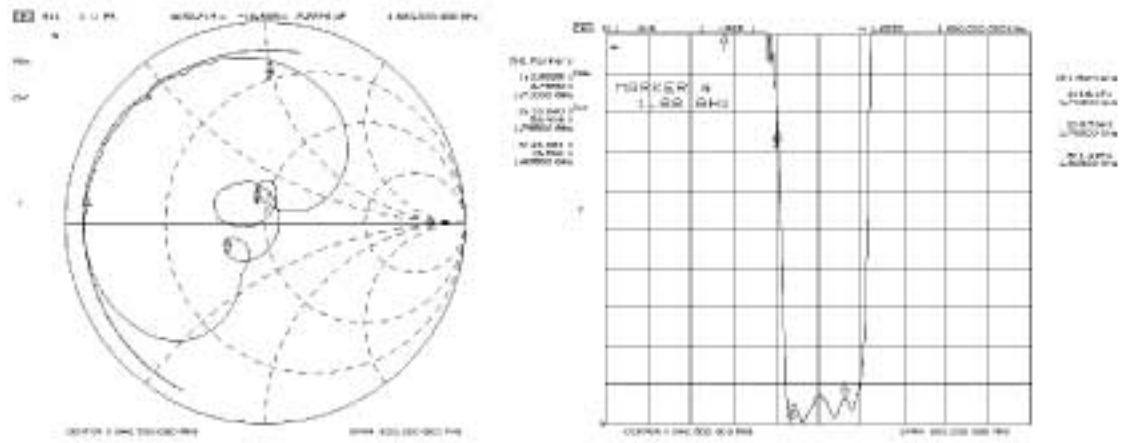
Note1. No matching network required for operation at 50 Ω

C. Frequency Characteristics : Transfer function

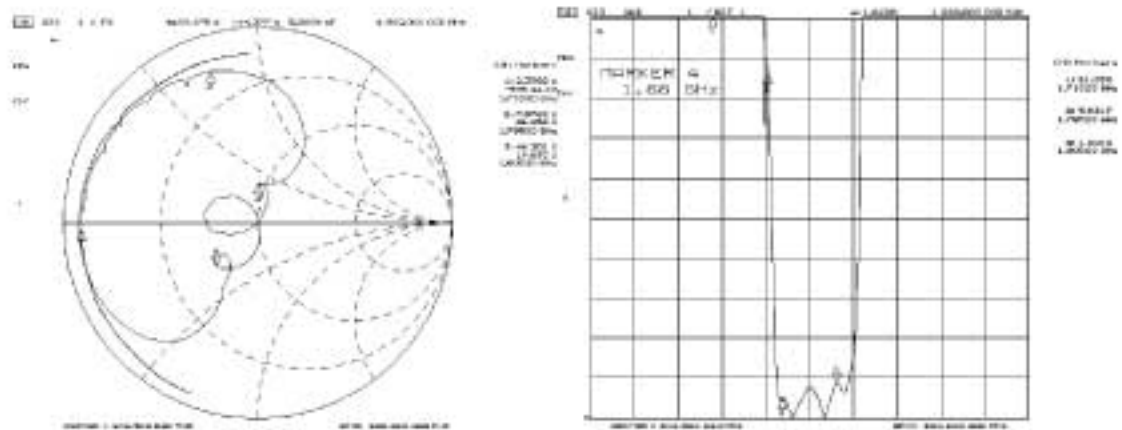


Reflections Functions :

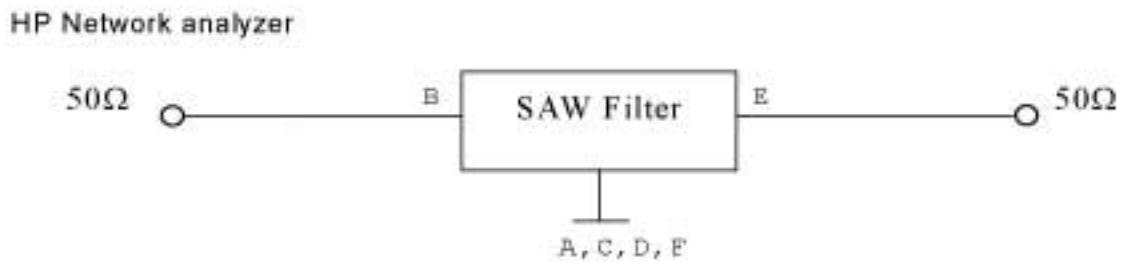
S11 VSWR



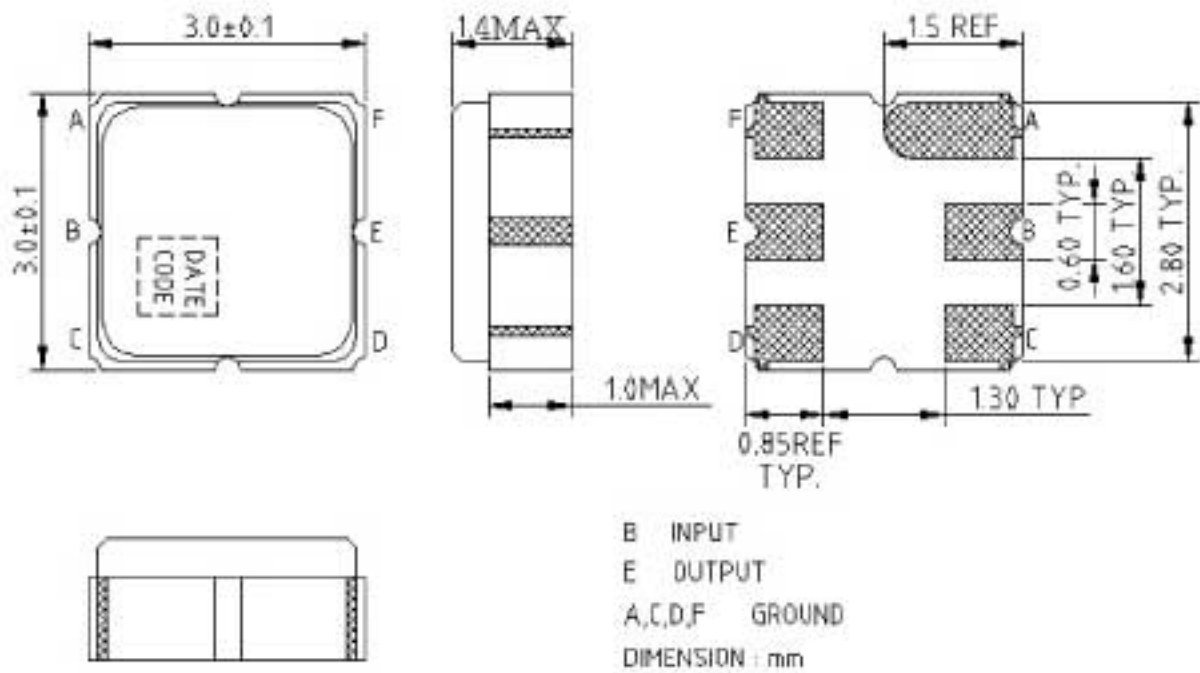
S22 VSWR



D. MEASUREMENT CIRCUIT:

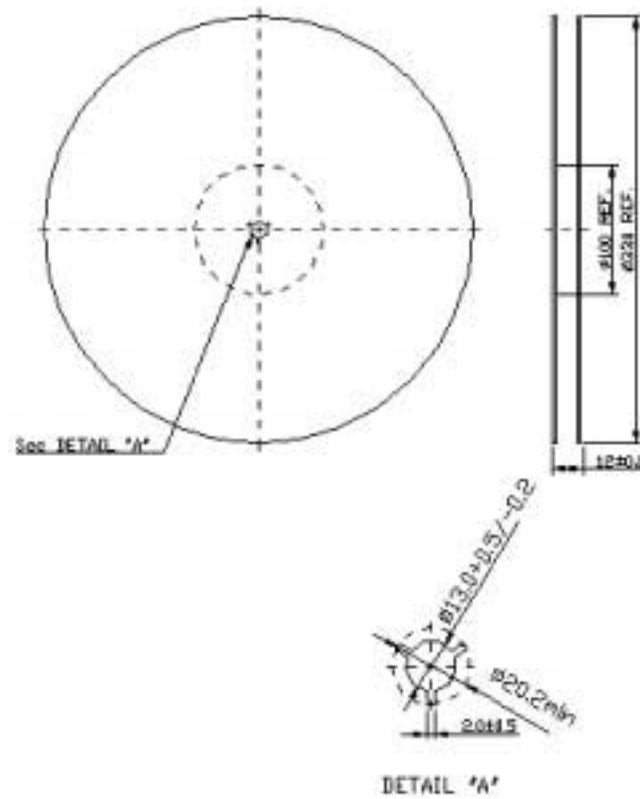


E. OUTLINE DRAWING:

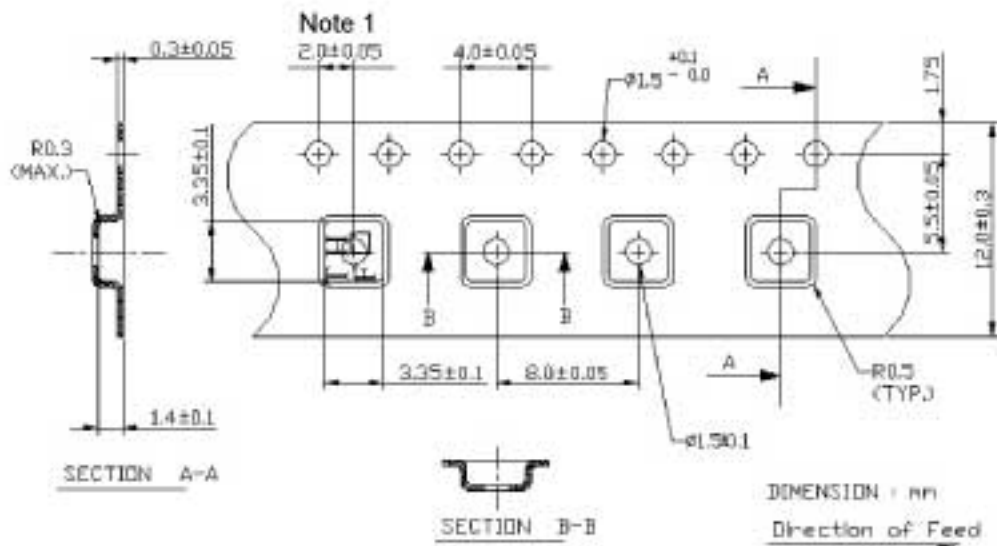


F. PACKING:

1. REEL DIMENSION



2. TAPE DIMENSION



Note :

1. Pocket position relative to sprocket hole measured as true position of pocket, not pocket hole.

G. Reflow Profile:

1. Preheating shall be fixed at 140 ~ 160 °C for 60 ~ 90 seconds.
2. Ascending time to preheating temperature 150 °C shall be 30 seconds min.
3. Heating shall be fixed at 200 °C for 50 ~ 60 seconds and at 230±10 °C peak.

